

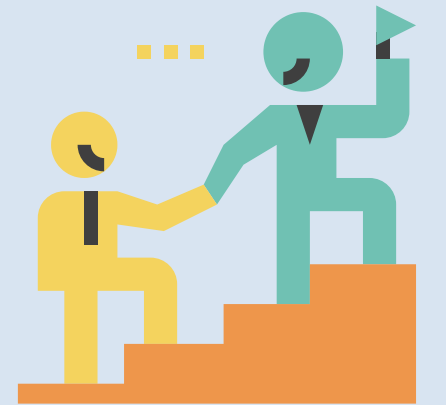
# What is the role of the GP in Integrated Care Systems?

*The views of GP trainees & early career GPs*

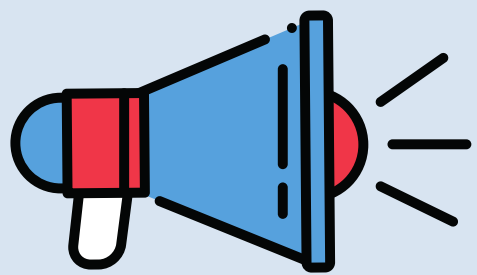


## Theme 1 : The Opportunities and Costs of Integration

Integration presents a genuine opportunity to achieve economies of scale and smooth the primary/secondary care interface.



Strong general practice leadership at all levels of the system is essential. Dedicated time to do this, as well as specific training to maximise effectiveness in clinical leadership roles, is vital.



There is a real need for primary care to be sufficiently represented at ICS level; to ensure our voice is heard, and to avoid “us vs them” scenarios.

## Theme 2 : Future Ways of Working



General practice is best when focussed on long term condition management, preventative medicine and continuity of care, as well as providing an urgent care service.



The need to meet “unlimited” demand from patients is unsustainable, regardless of whether these patients are managed remotely or face-to-face. An ICS-wide resilience plan should be developed for when demand outstrips what can safely be provided in general practice.



Additional Roles are a much-needed complement to the workforce but more robust supervision models, as well as greater familiarity with the skills each role brings, are needed.

### Post Session Survey Results : Do ICS's, PCNs and additional roles present a good opportunity to deliver improved patient care?

	% agree / strongly agree
Working more collaboratively within an ICS	74%
PCNs	77%
Additional roles	82%